

FIGURE 6  
**HYDRAULIC CATEGORIES**  
**5% AEP EVENT**  
**DARLING HARBOUR CATCHMENT**

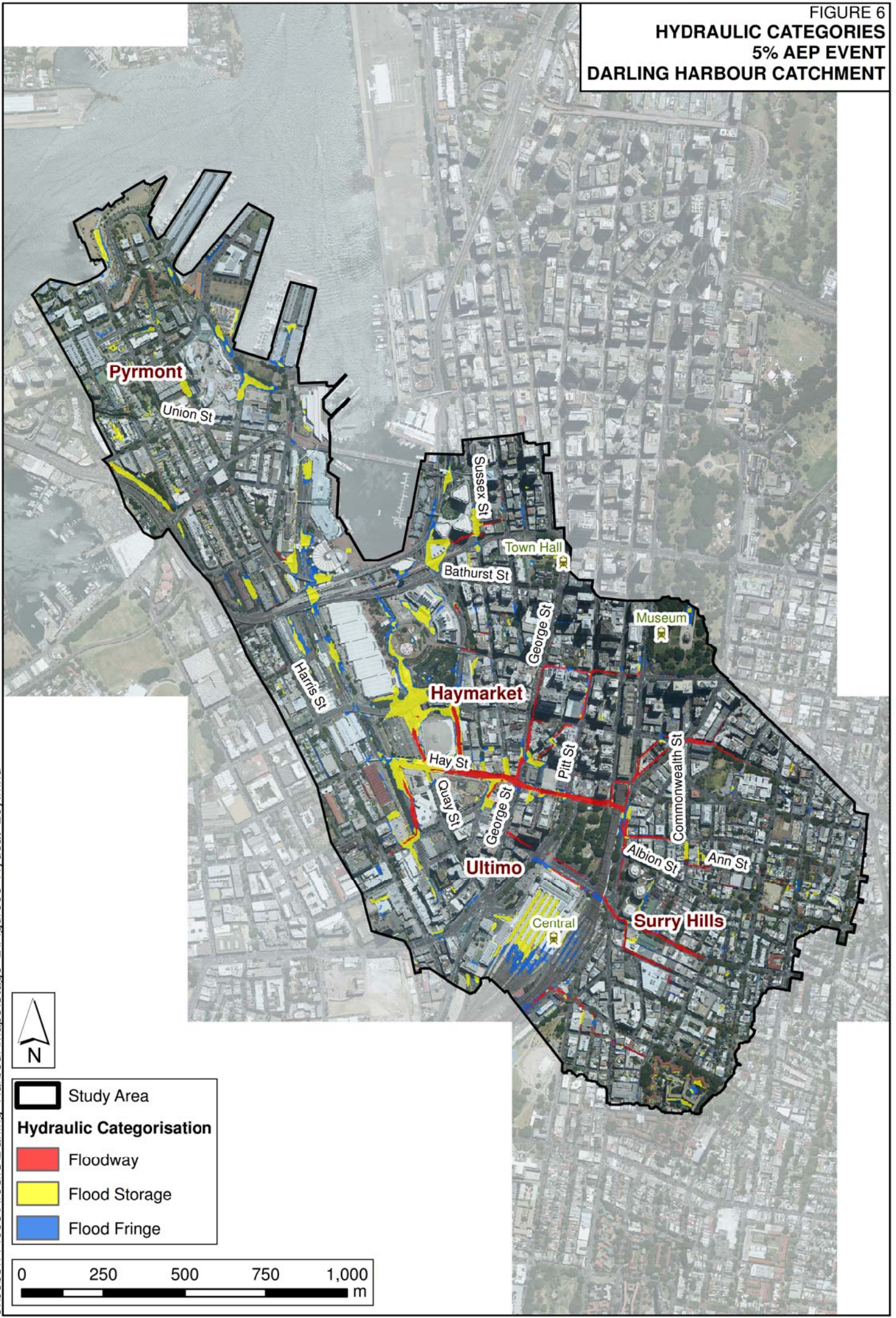
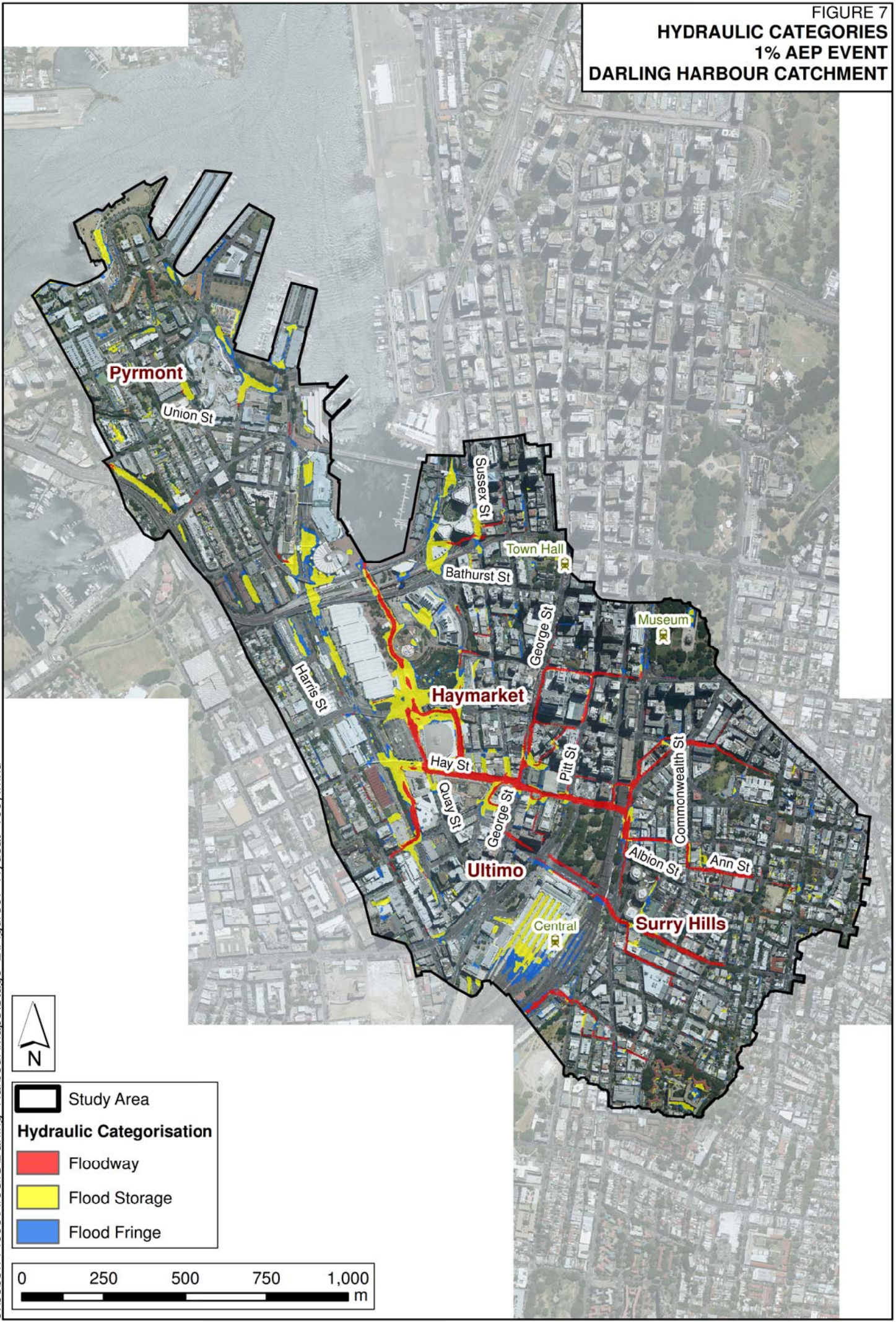




FIGURE 7  
**HYDRAULIC CATEGORIES**  
**1% AEP EVENT**  
**DARLING HARBOUR CATCHMENT**



J:\Jobs\114095\ArcGIS\Darling Harbour\Maps\Stage 2\Figure07 Hydcatt 100y.mxd



**Study Area**

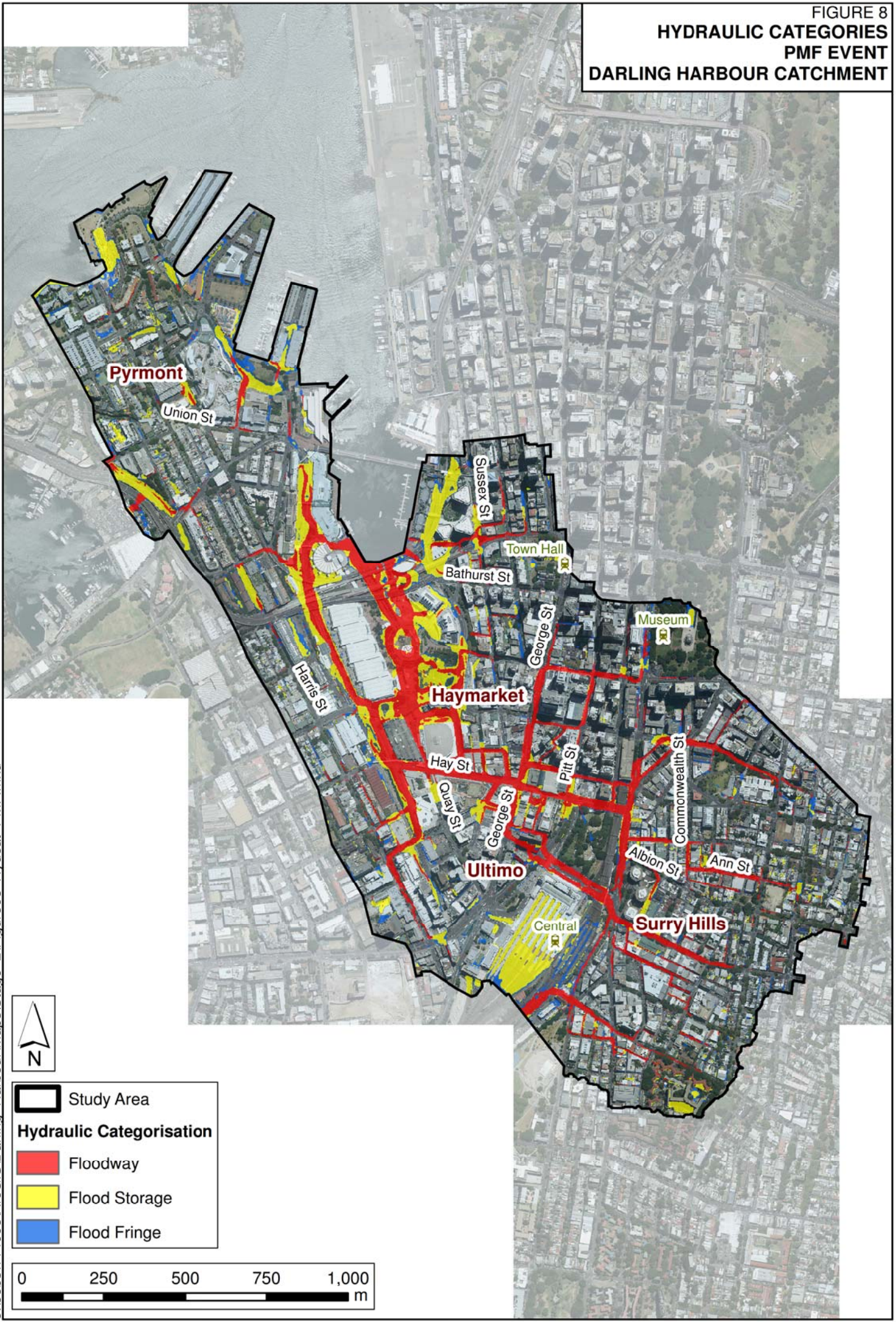
**Hydraulic Categorisation**

- Floodway
- Flood Storage
- Flood Fringe





FIGURE 8  
**HYDRAULIC CATEGORIES**  
**PMF EVENT**  
**DARLING HARBOUR CATCHMENT**



- Study Area
- Hydraulic Categorisation**
- Floodway
- Flood Storage
- Flood Fringe





FIGURE 9  
HAZARD CATEGORIES  
0.5 EY EVENT  
DARLING HARBOUR CATCHMENT

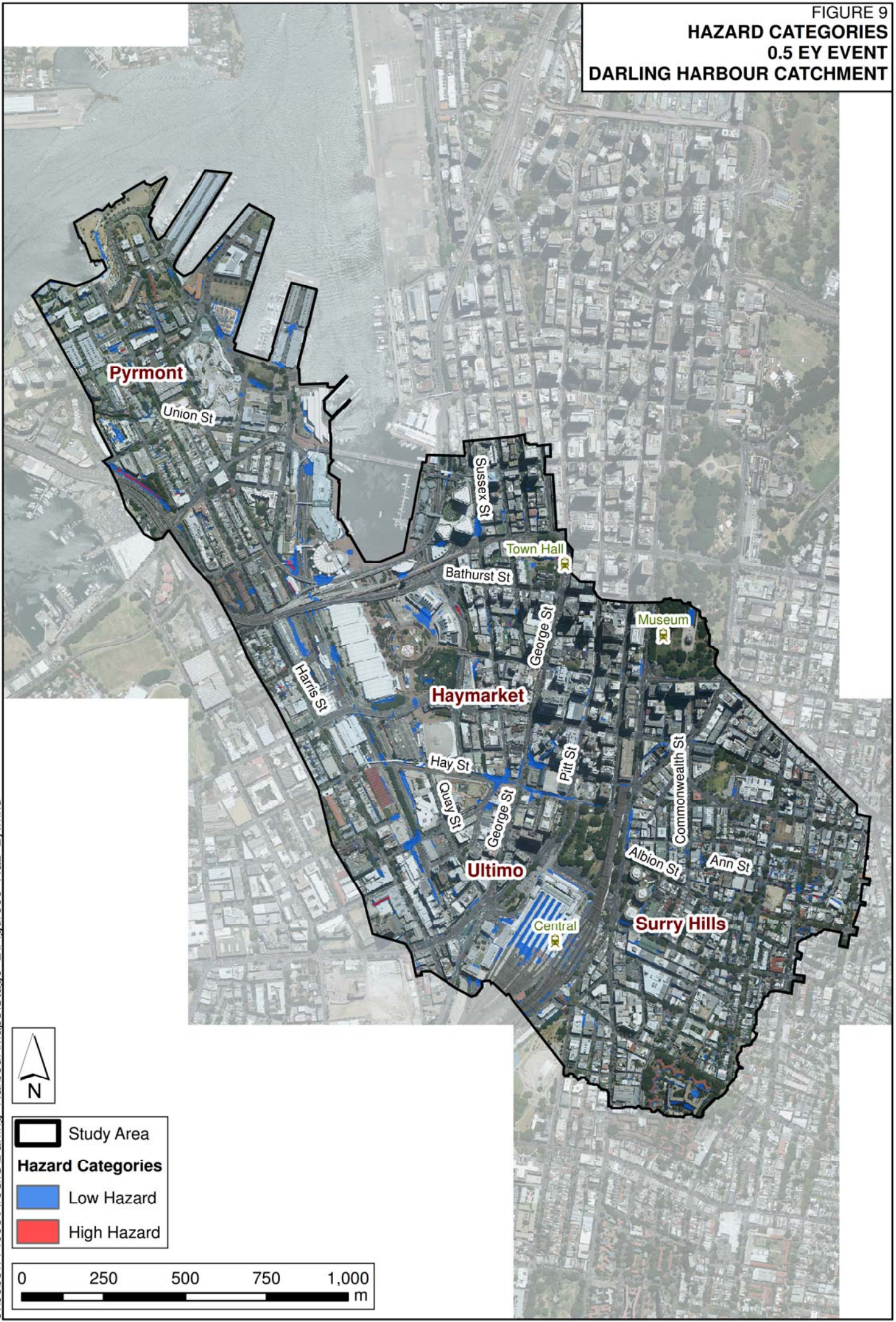




FIGURE 10  
HAZARD CATEGORIES  
0.2 EY EVENT  
DARLING HARBOUR CATCHMENT






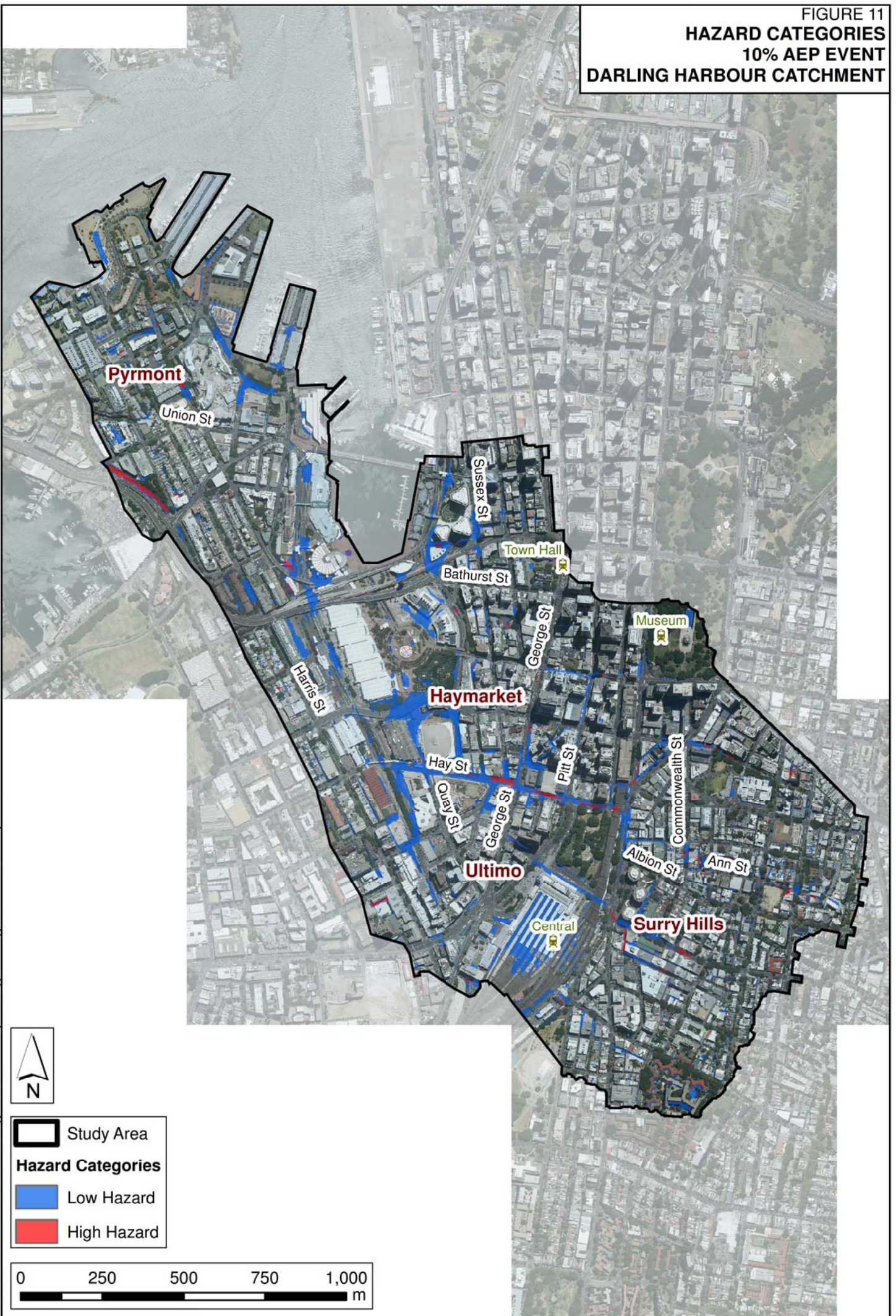
-  Study Area
- Hazard Categories**
-  Low Hazard
-  High Hazard





FIGURE 11  
**HAZARD CATEGORIES**  
**10% AEP EVENT**  
**DARLING HARBOUR CATCHMENT**






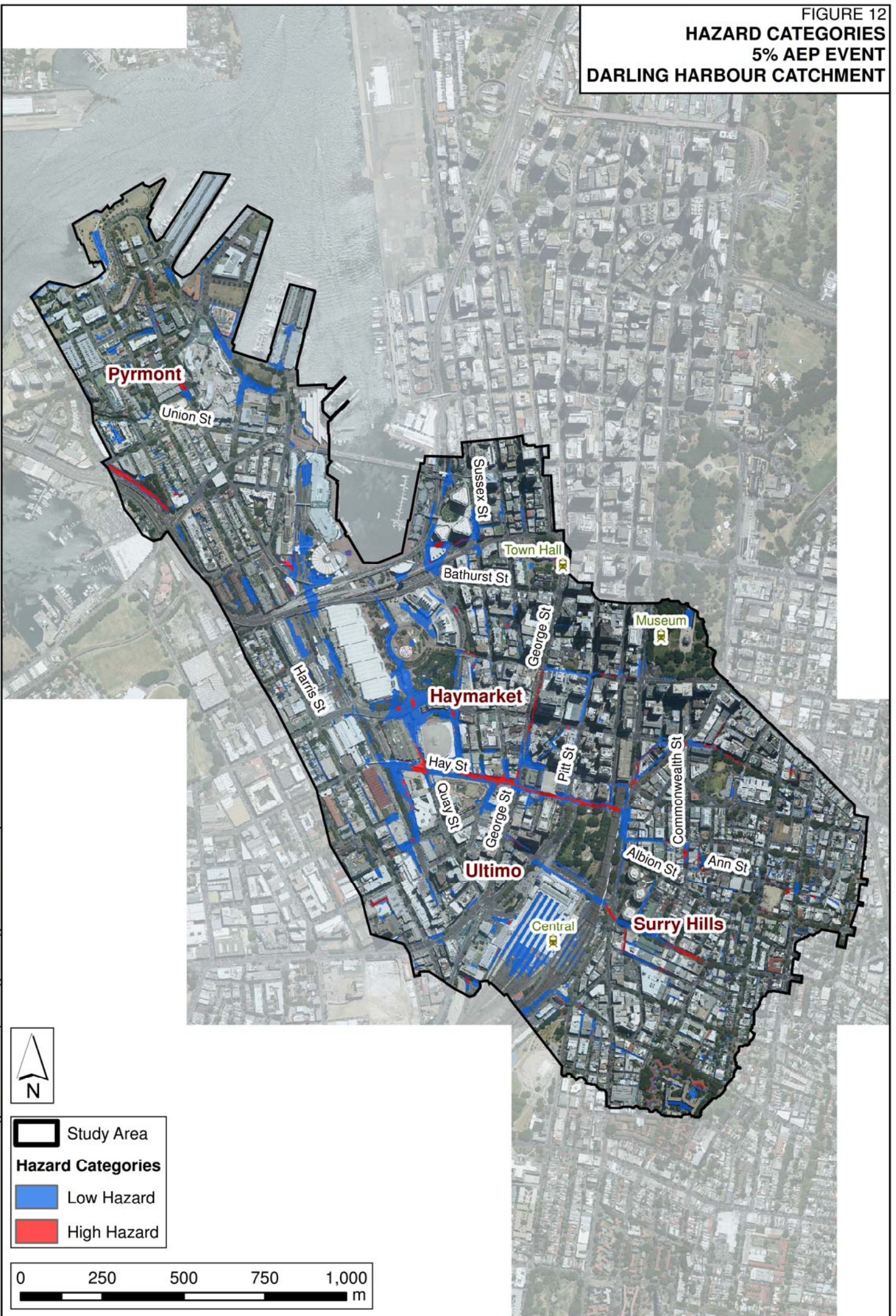
-  Study Area
- Hazard Categories**
-  Low Hazard
-  High Hazard





FIGURE 12  
**HAZARD CATEGORIES**  
**5% AEP EVENT**  
**DARLING HARBOUR CATCHMENT**





**FIGURE 13**  
**HAZARD CATEGORIES**  
**2% AEP EVENT**  
**DARLING HARBOUR CATCHMENT**

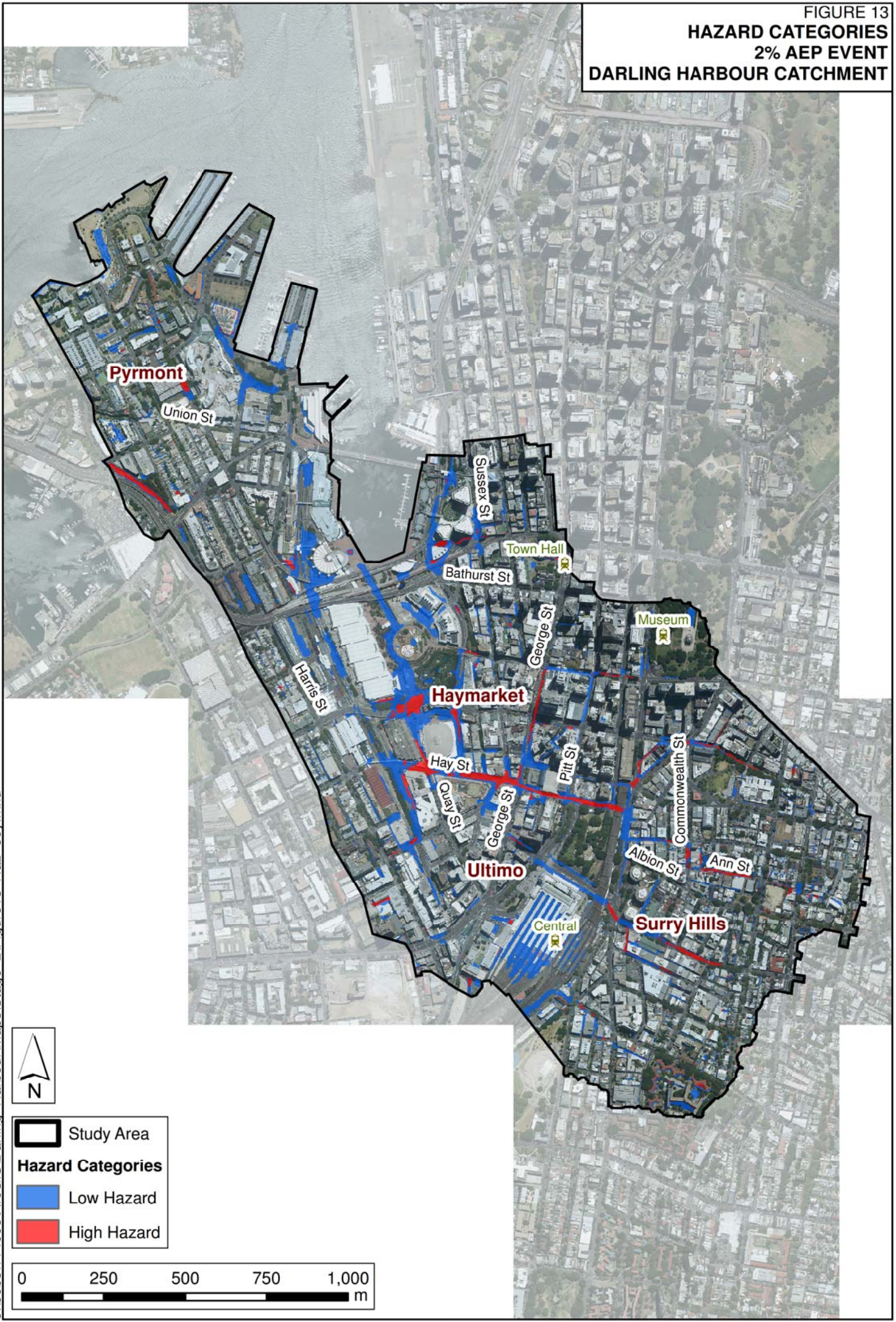
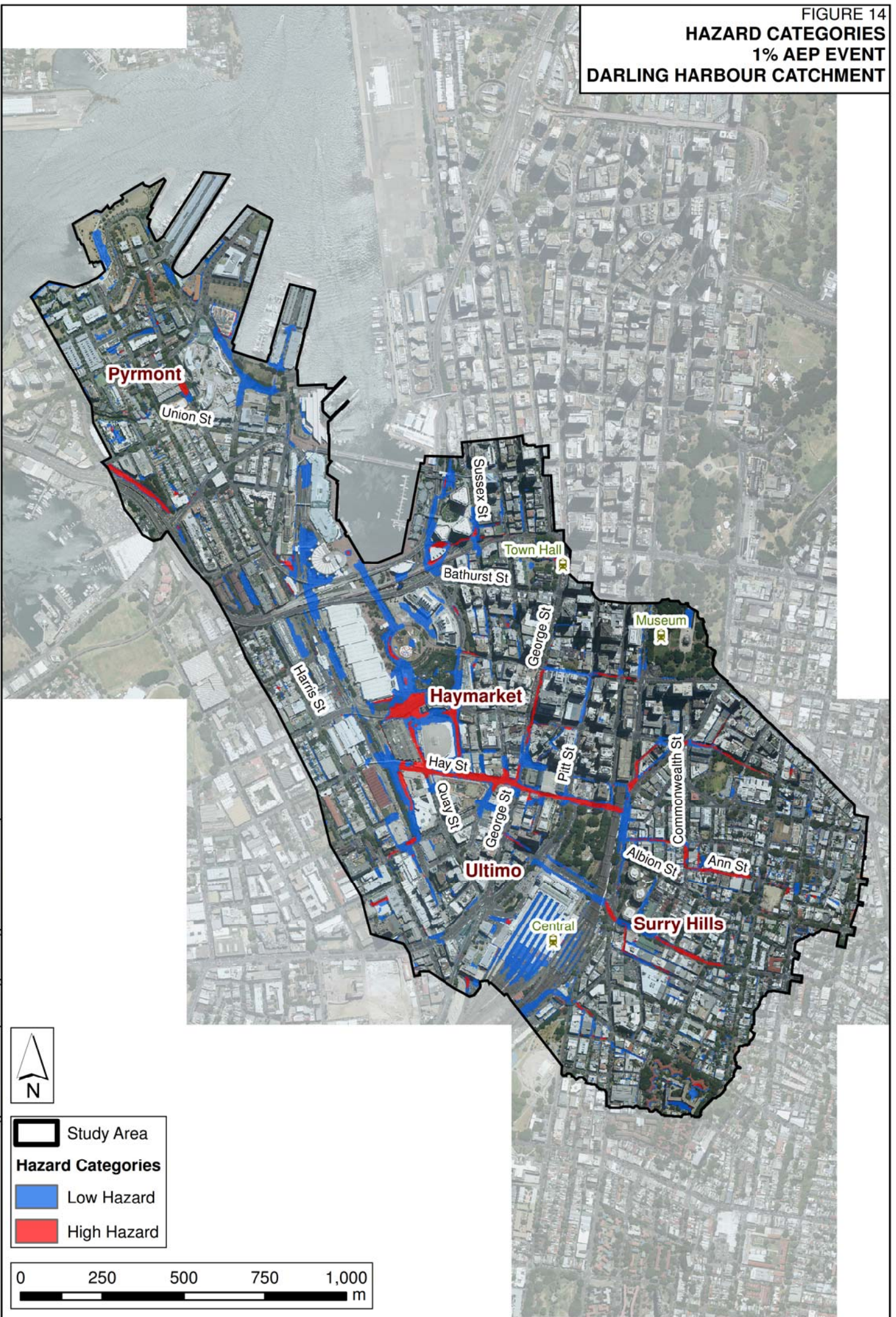




FIGURE 14  
HAZARD CATEGORIES  
1% AEP EVENT  
DARLING HARBOUR CATCHMENT



J:\Jobs\114095\ArcGIS\Darling Harbour\Maps\Stage 2\Figure14 Haz 100y.mxd






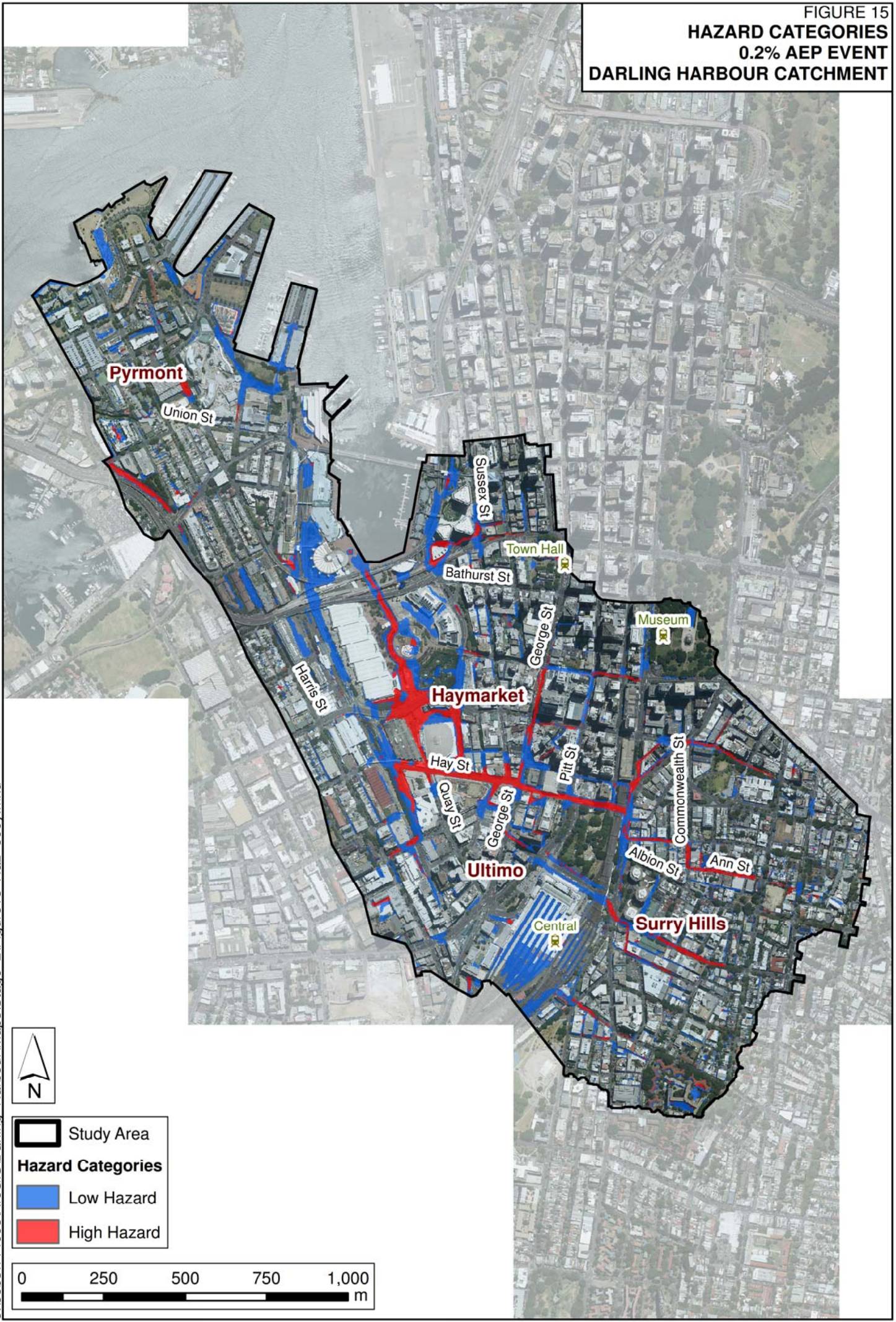
-  Study Area
- Hazard Categories**
-  Low Hazard
-  High Hazard





FIGURE 15  
**HAZARD CATEGORIES**  
**0.2% AEP EVENT**  
**DARLING HARBOUR CATCHMENT**



J:\Jobs\114095\ArcGIS\Darling Harbour\Maps\Stage 2\Figure15 Haz 500y.mxd



- Study Area
- Hazard Categories**
- Low Hazard
- High Hazard





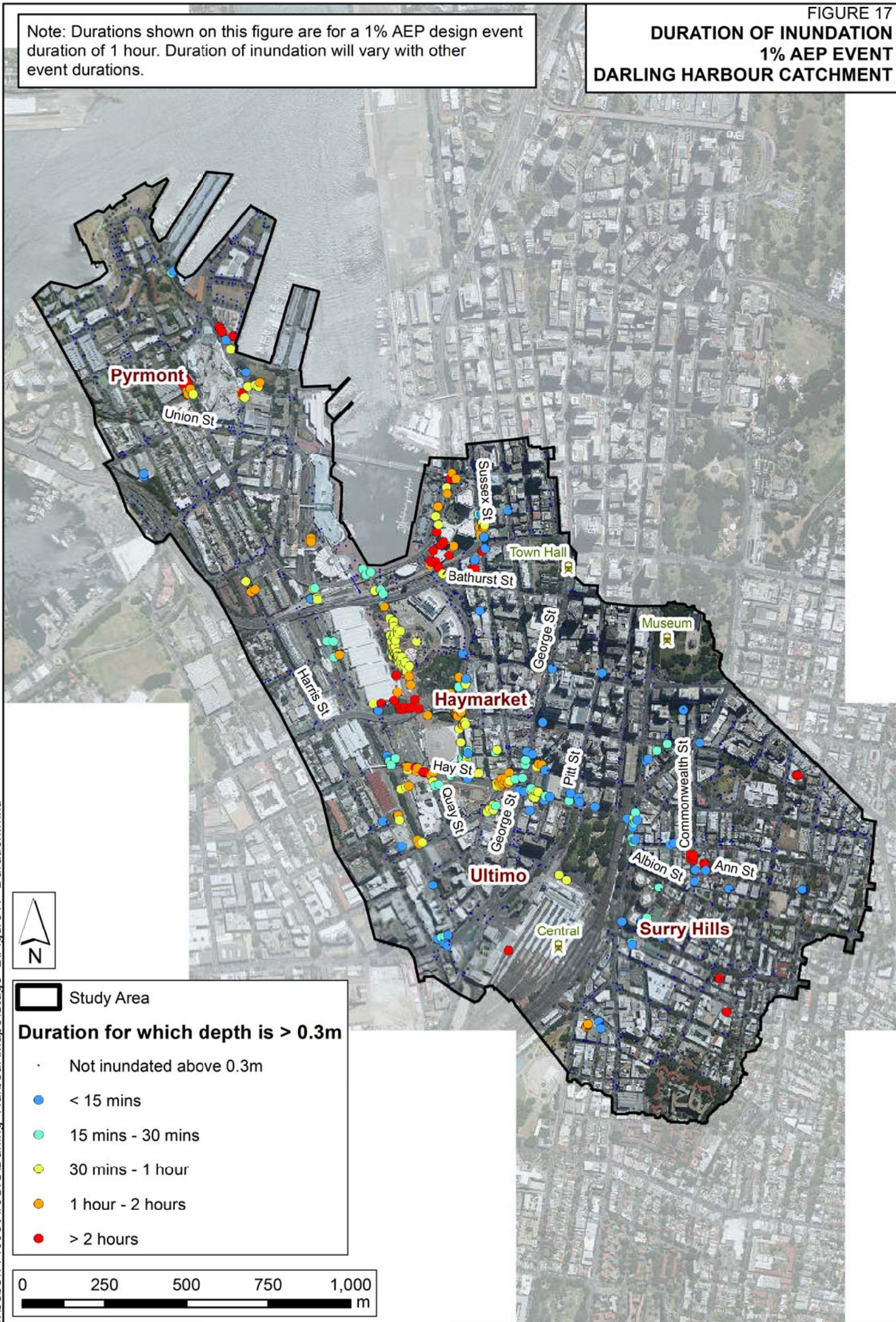
FIGURE 16  
**HAZARD CATEGORIES**  
**PMF EVENT**  
**DARLING HARBOUR CATCHMENT**





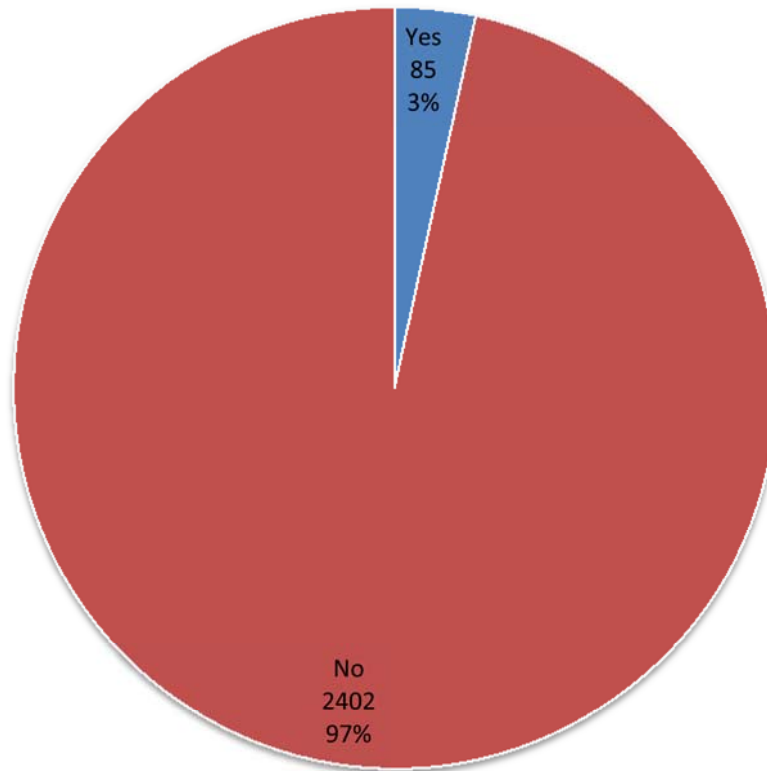
**DURATION OF INUNDATION  
1% AEP EVENT  
DARLING HARBOUR CATCHMENT**

Note: Durations shown on this figure are for a 1% AEP design event duration of 1 hour. Duration of inundation will vary with other event durations.

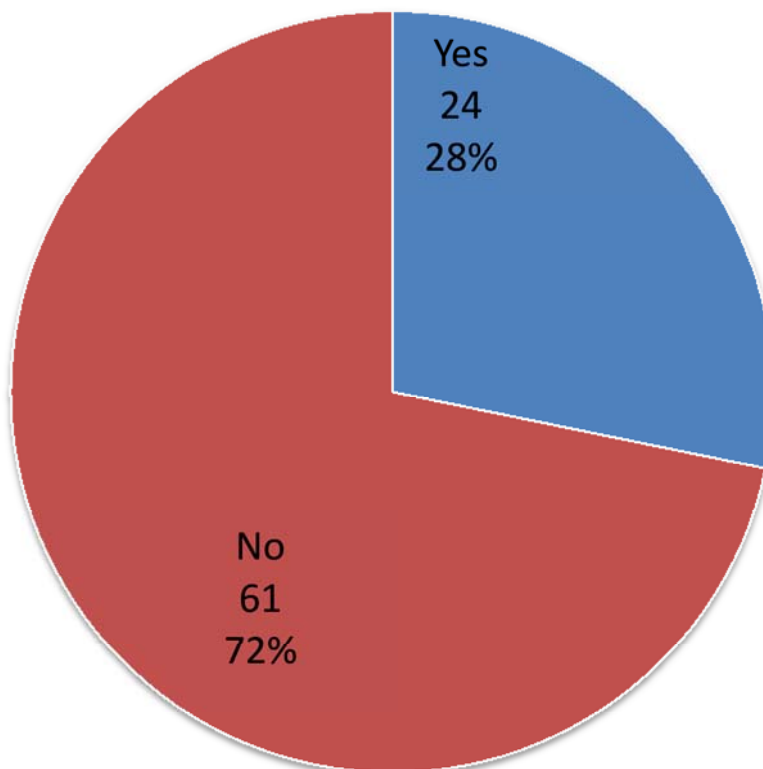




### A: Number of Respondents

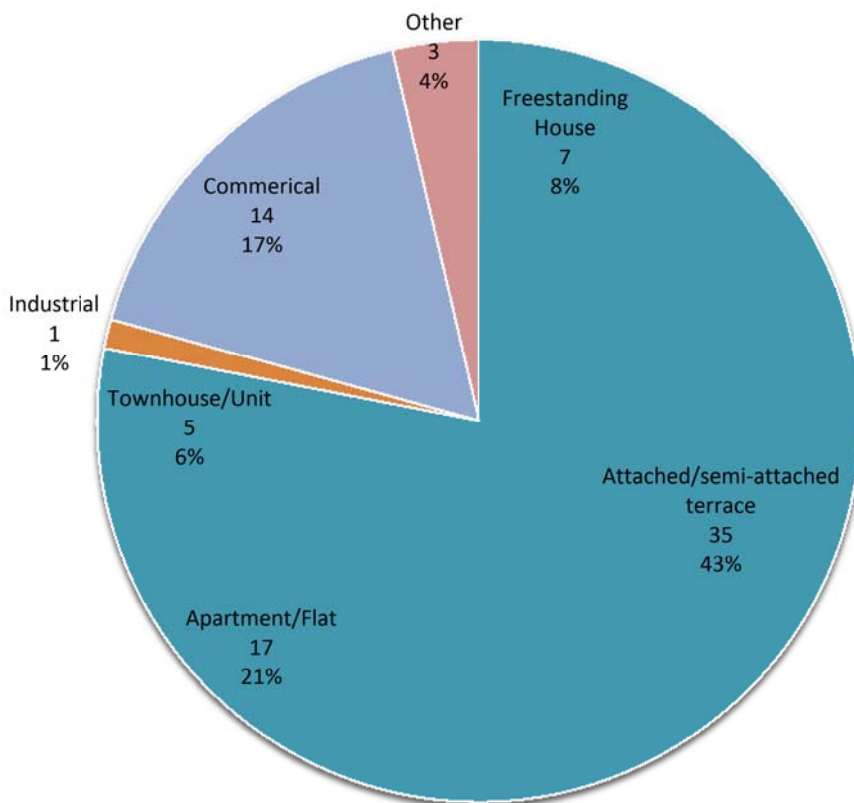


### B: Experienced Flooding

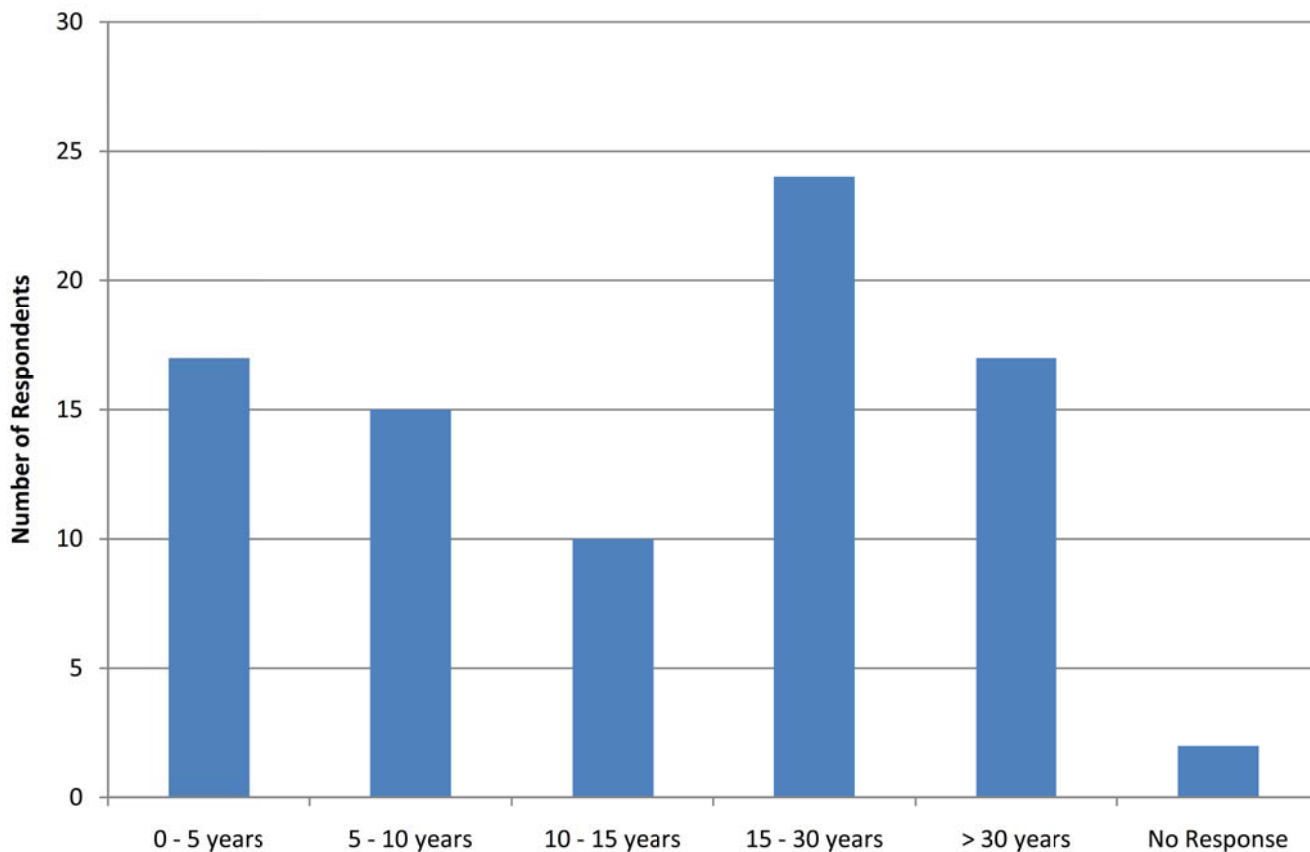




### C: Property Type

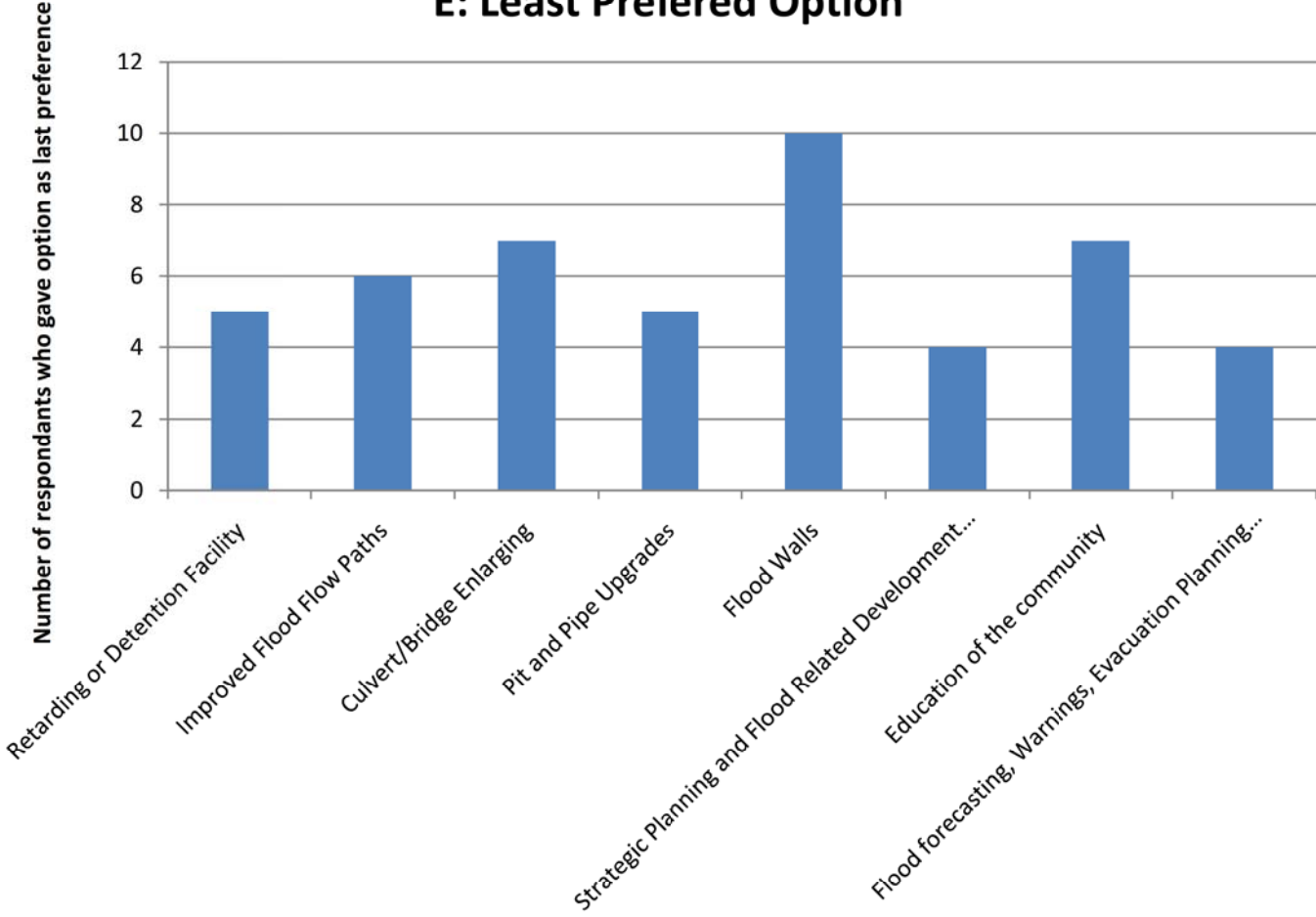


### D: Period of Living/Working/Owning Property

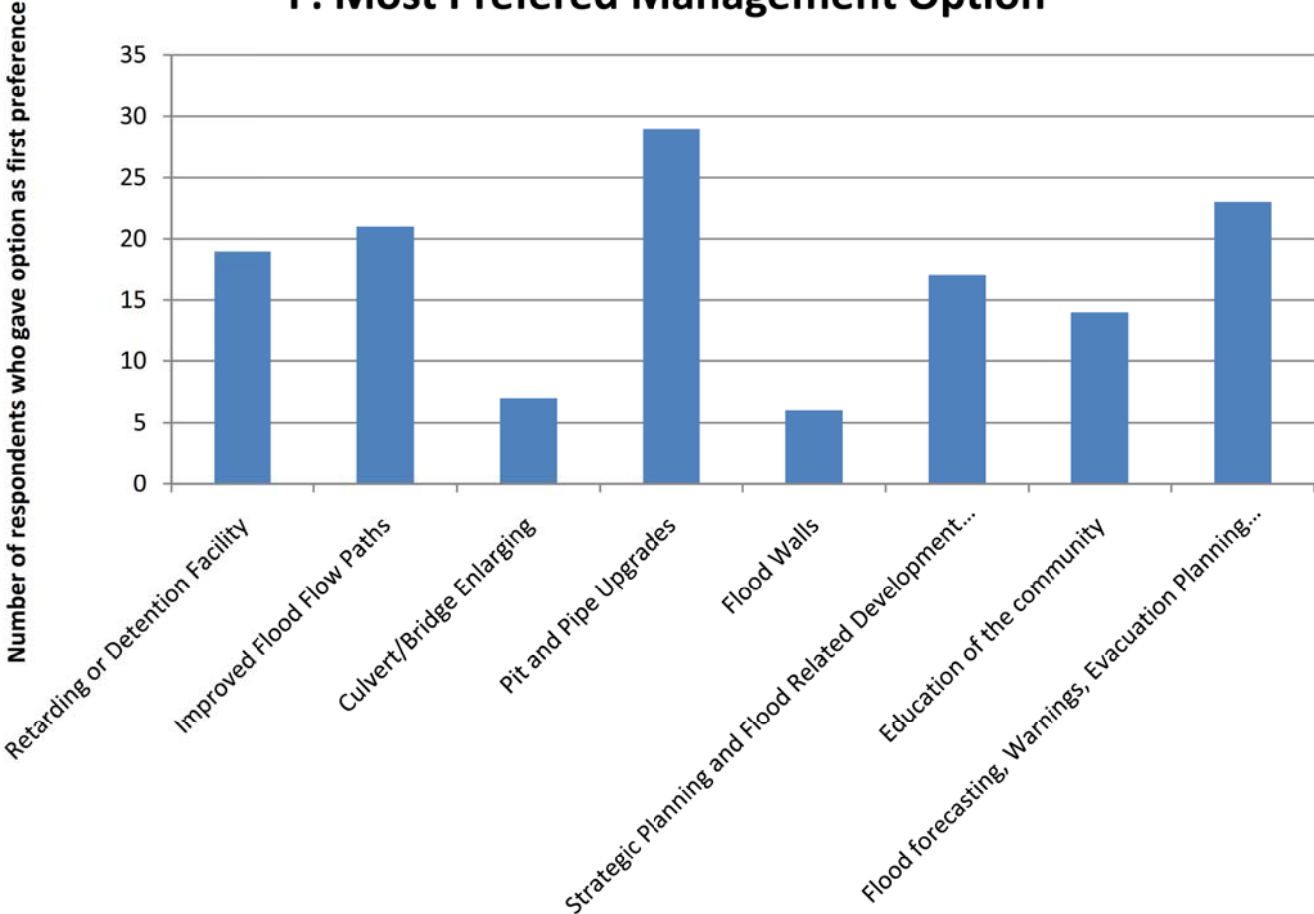




**E: Least Preferred Option**

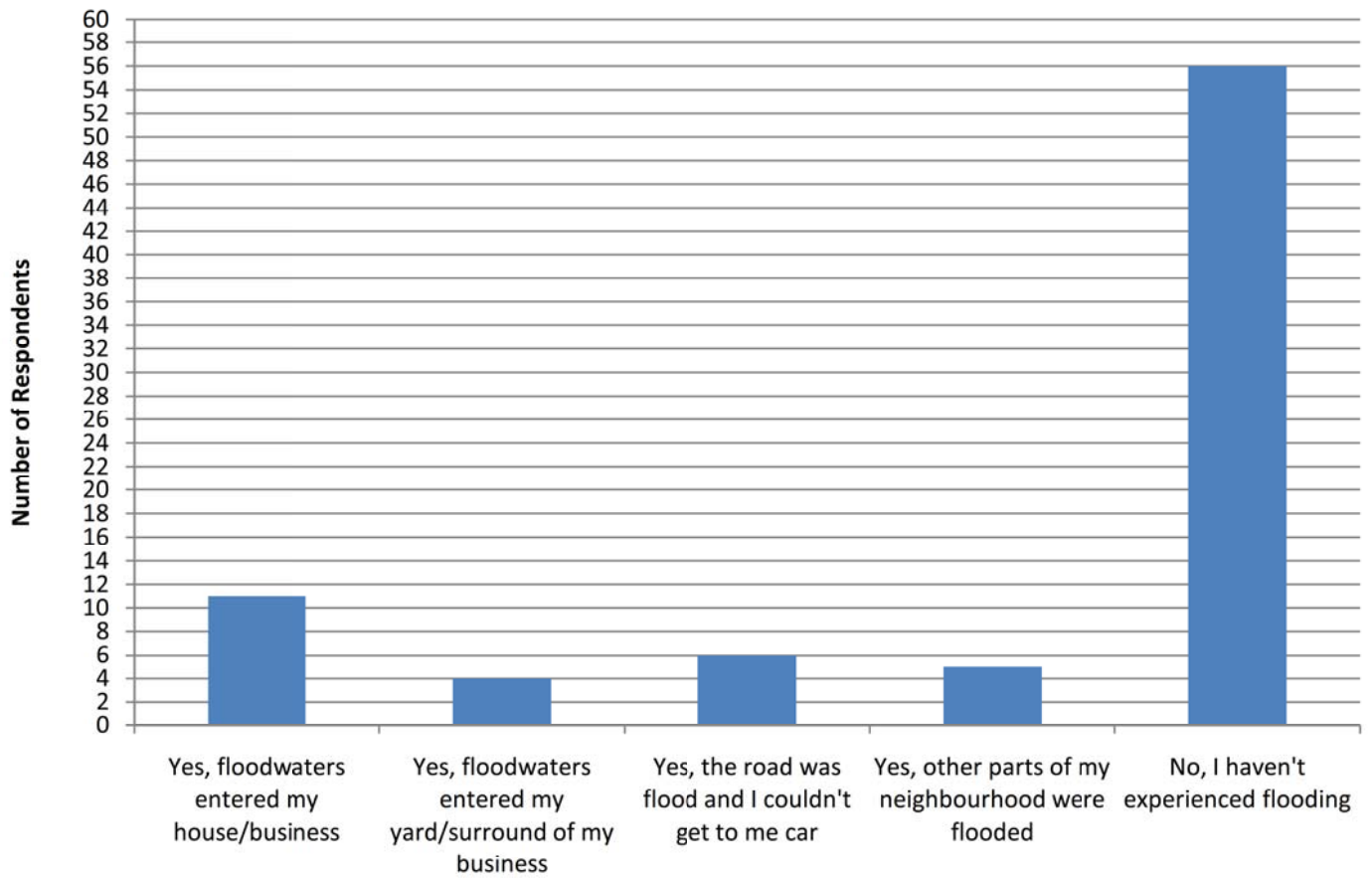


**F: Most Preferred Management Option**



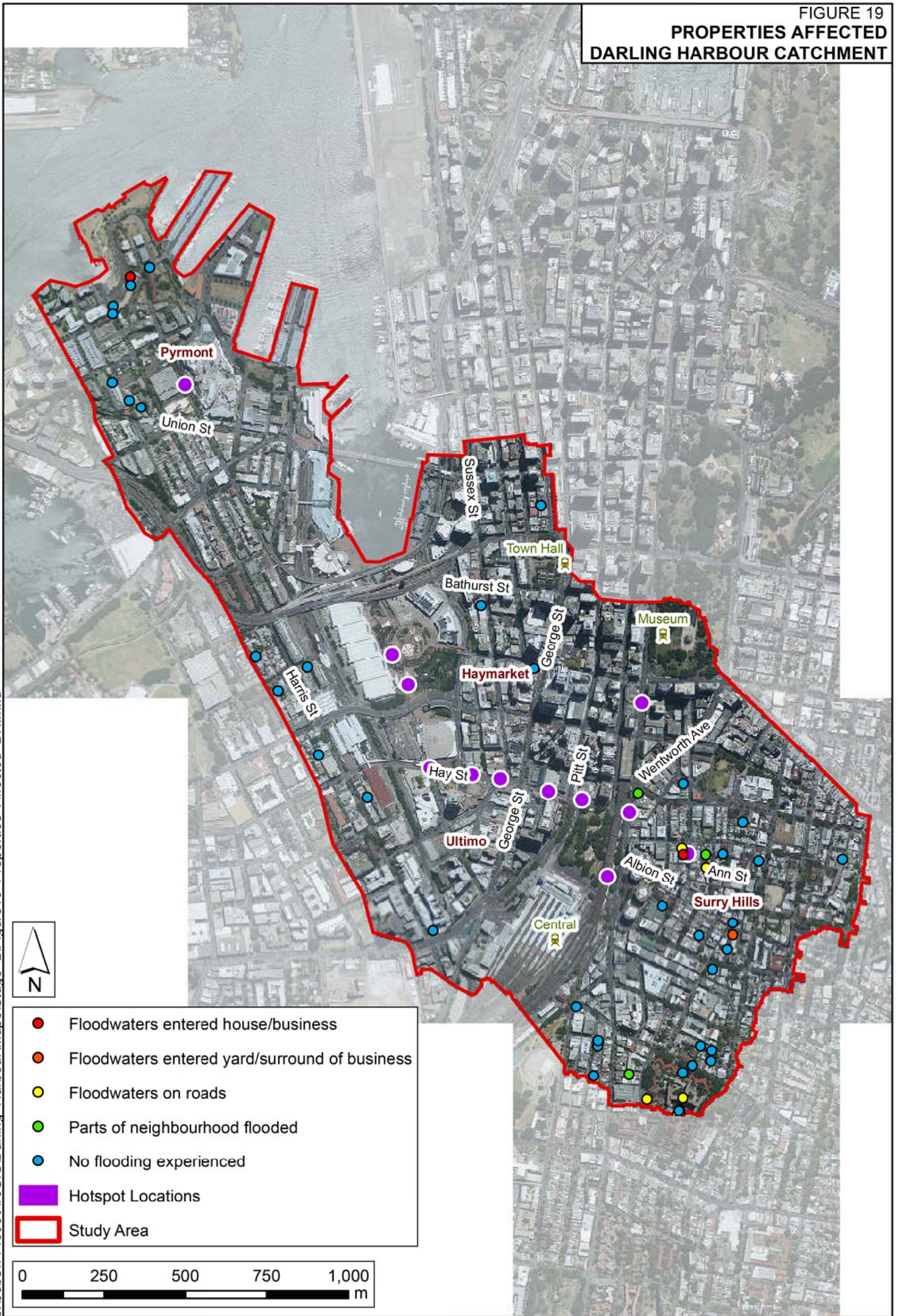


### G: Location of Flooding Experienced





**FIGURE 19  
PROPERTIES AFFECTED  
DARLING HARBOUR CATCHMENT**



J:\Jobs\114095\ArcGIS\Darling Harbour\Maps\Stage 2\Figure19 Properties Affected\_DH.mxd



- Floodwaters entered house/business
- Floodwaters entered yard/surround of business
- Floodwaters on roads
- Parts of neighbourhood flooded
- No flooding experienced
- Hotspot Locations
- Study Area

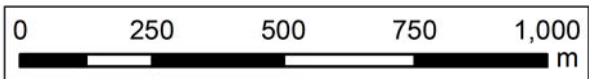




FIGURE 20  
DARLING HARBOUR  
OVER FLOOR FLOOD LIABILITY

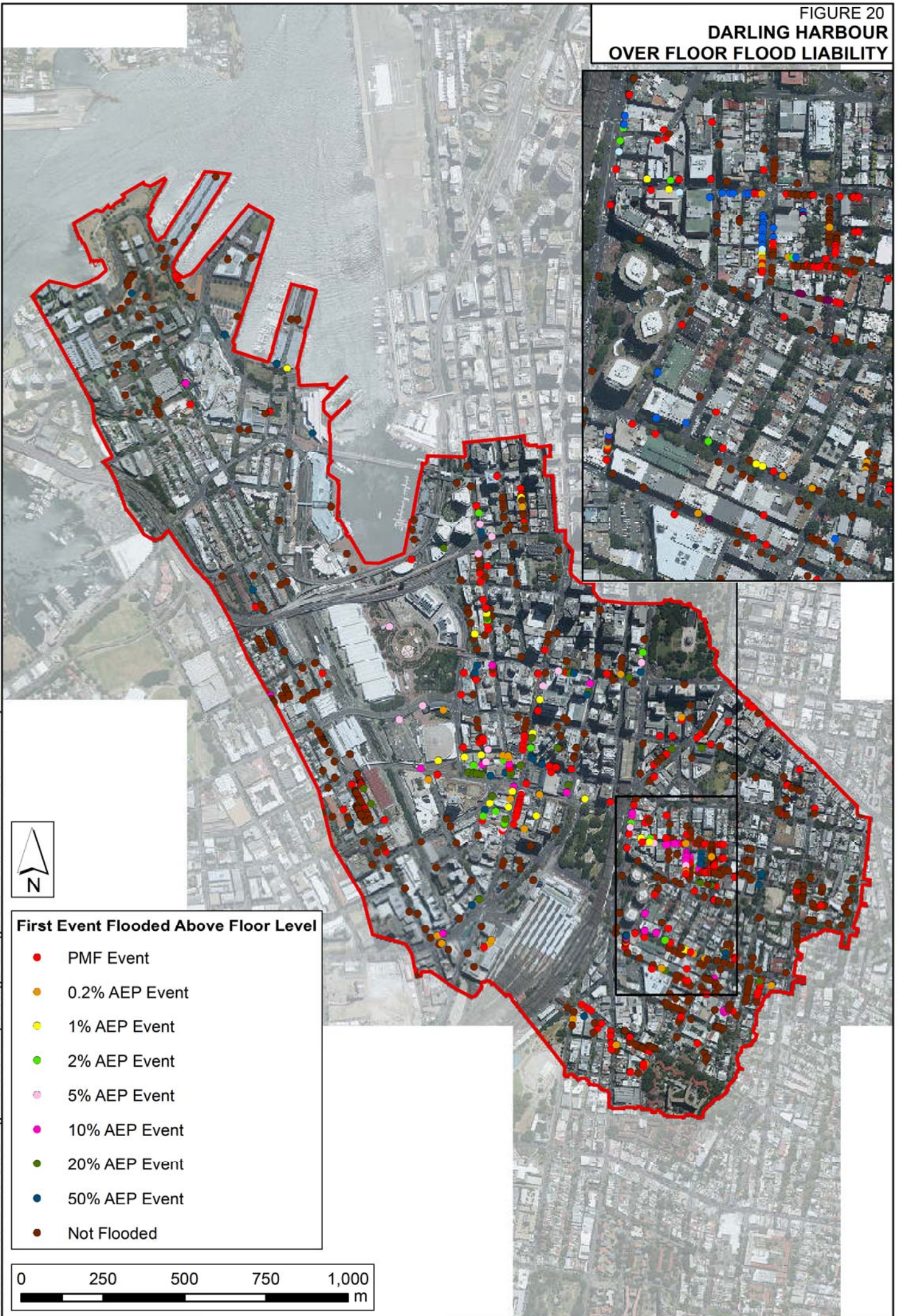
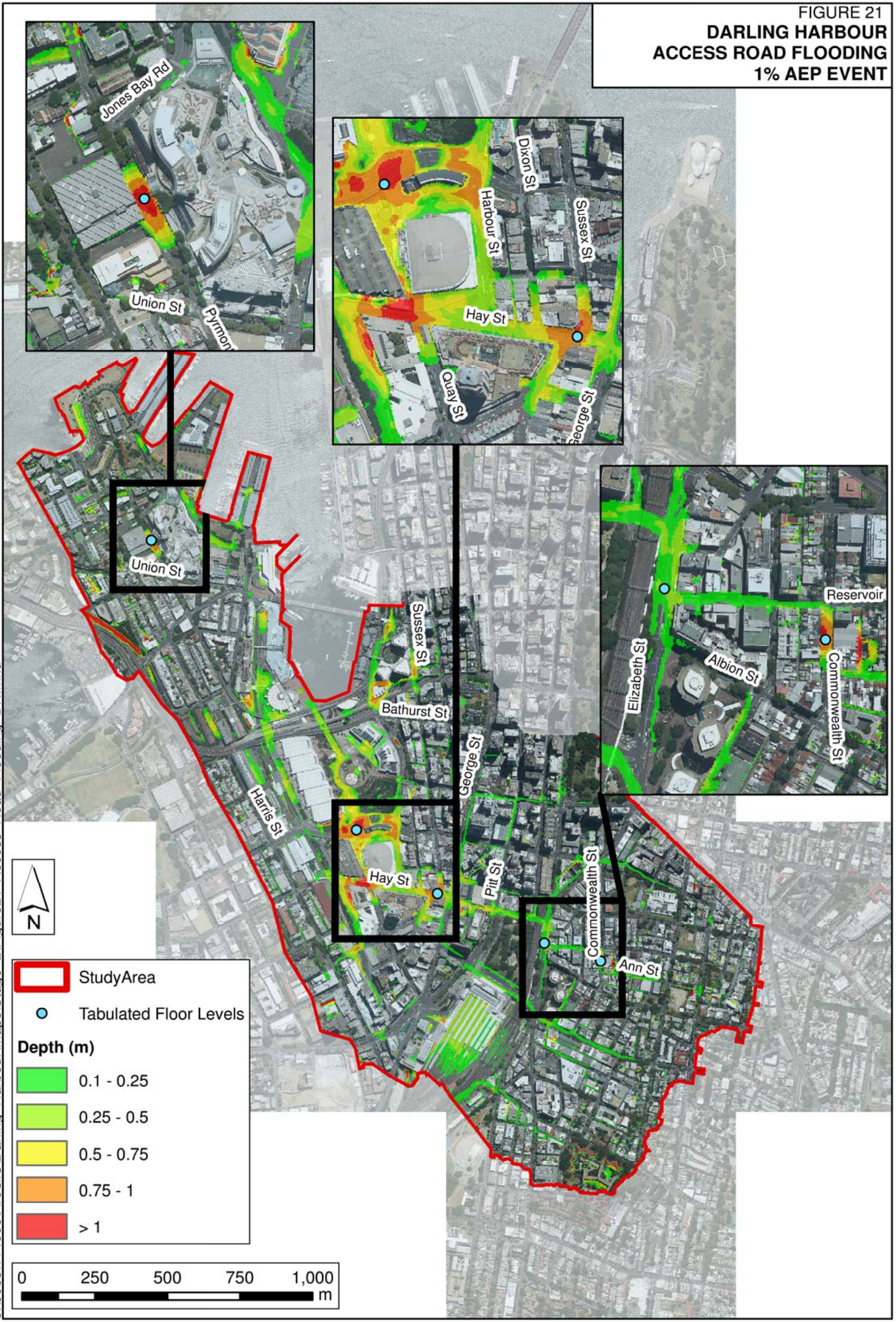


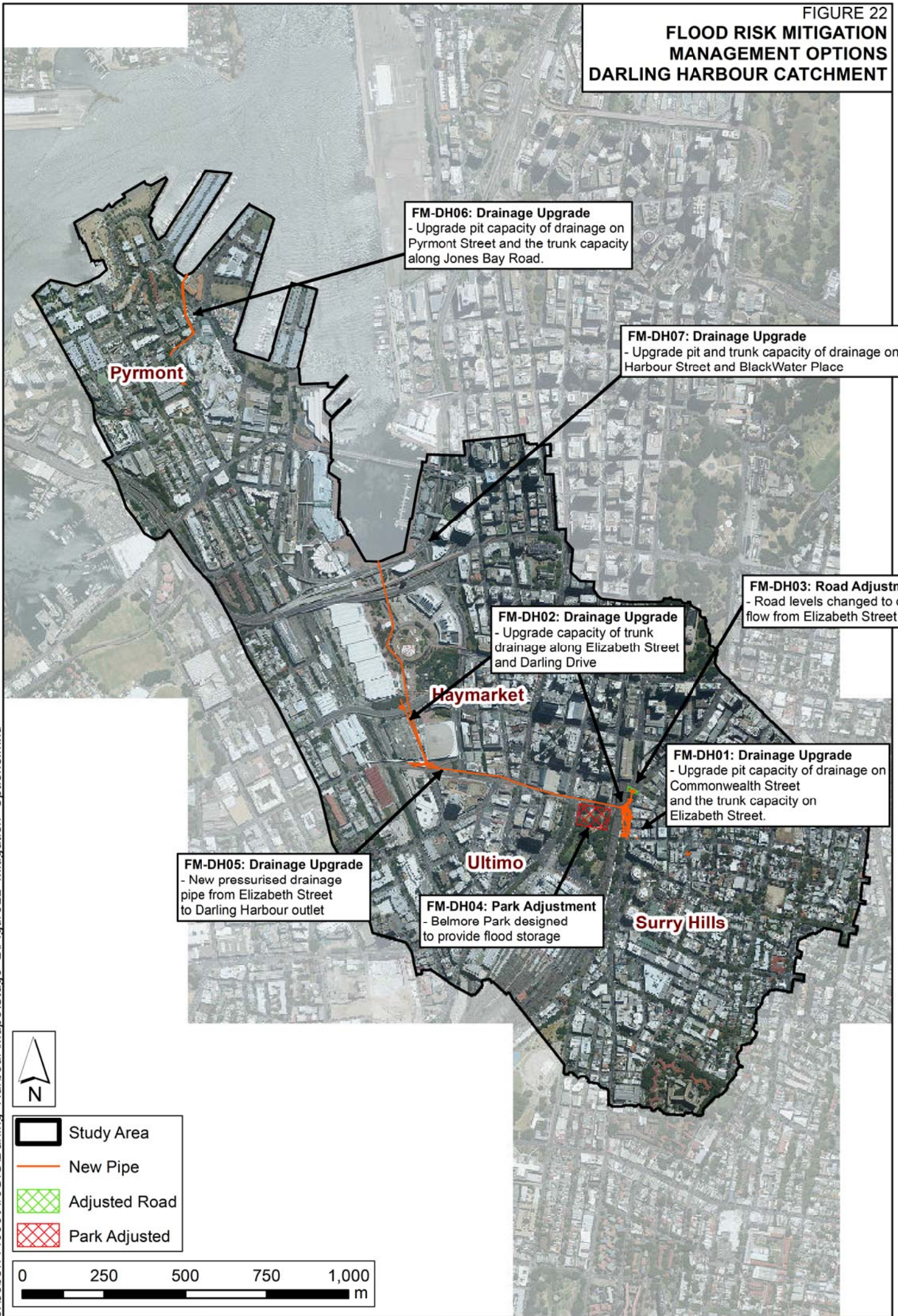


FIGURE 21  
**DARLING HARBOUR  
 ACCESS ROAD FLOODING  
 1% AEP EVENT**





**FIGURE 22  
FLOOD RISK MITIGATION  
MANAGEMENT OPTIONS  
DARLING HARBOUR CATCHMENT**



**FM-DH06: Drainage Upgrade**  
- Upgrade pit capacity of drainage on Pymont Street and the trunk capacity along Jones Bay Road.

**FM-DH07: Drainage Upgrade**  
- Upgrade pit and trunk capacity of drainage on Harbour Street and BlackWater Place

**FM-DH03: Road Adjustment**  
- Road levels changed to divert flow from Elizabeth Street





**FM-DH02: Drainage Upgrade**  
- Upgrade capacity of trunk drainage along Elizabeth Street and Darling Drive

**FM-DH01: Drainage Upgrade**  
- Upgrade pit capacity of drainage on Commonwealth Street and the trunk capacity on Elizabeth Street.

**FM-DH05: Drainage Upgrade**  
- New pressurised drainage pipe from Elizabeth Street to Darling Harbour outlet

**FM-DH04: Park Adjustment**  
- Belmore Park designed to provide flood storage



-  Study Area
-  New Pipe
-  Adjusted Road
-  Park Adjusted

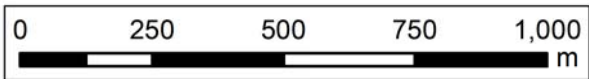




FIGURE 23  
COMMONWEALTH STREET  
EXISTING DESIGN DEPTH  
1% AEP EVENT

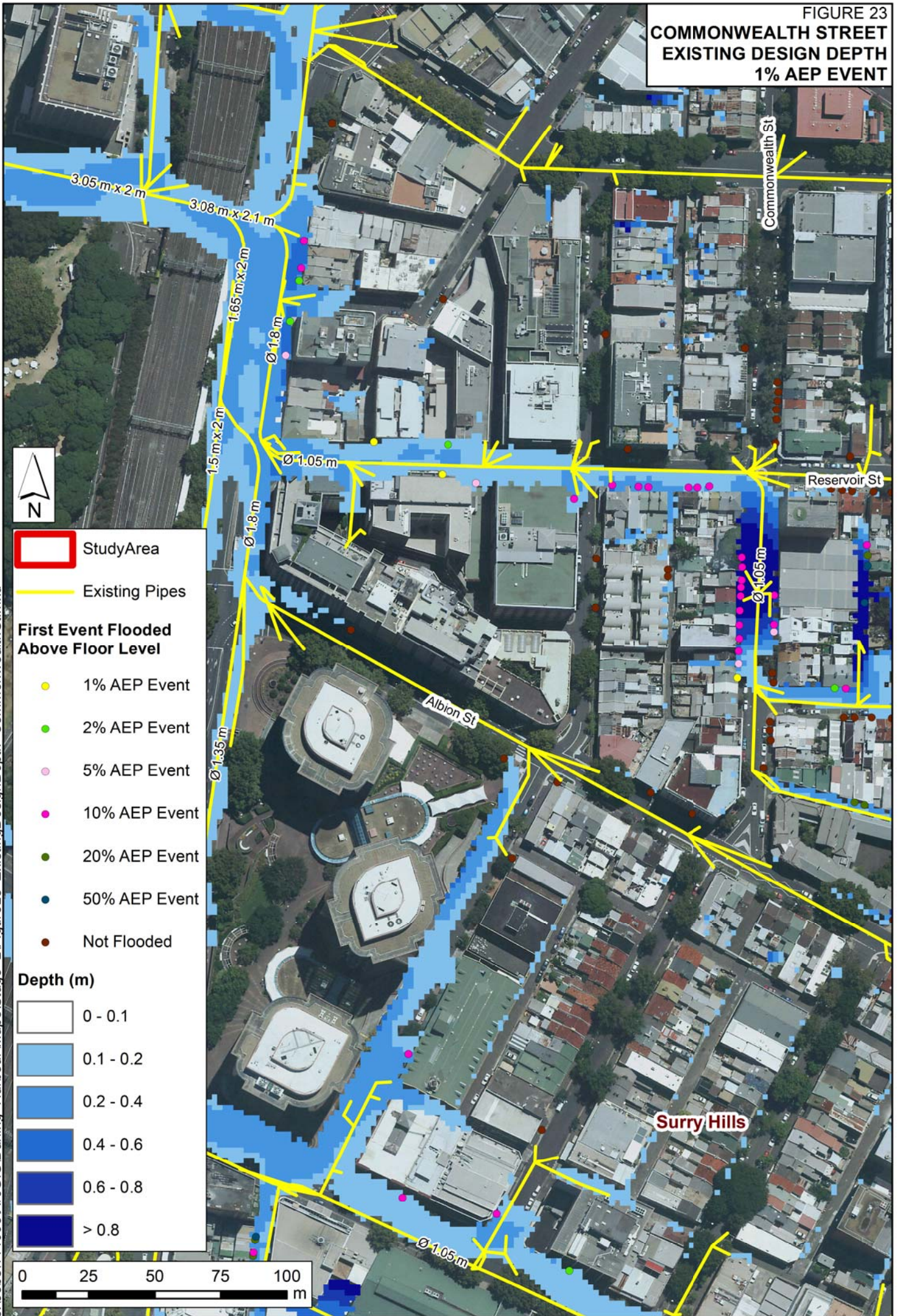
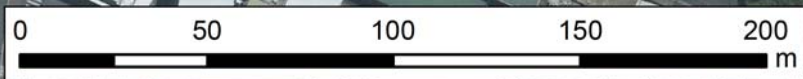




FIGURE 24  
 OPTION FM - DH01  
 5% AEP EVENT FLOOD IMPACT



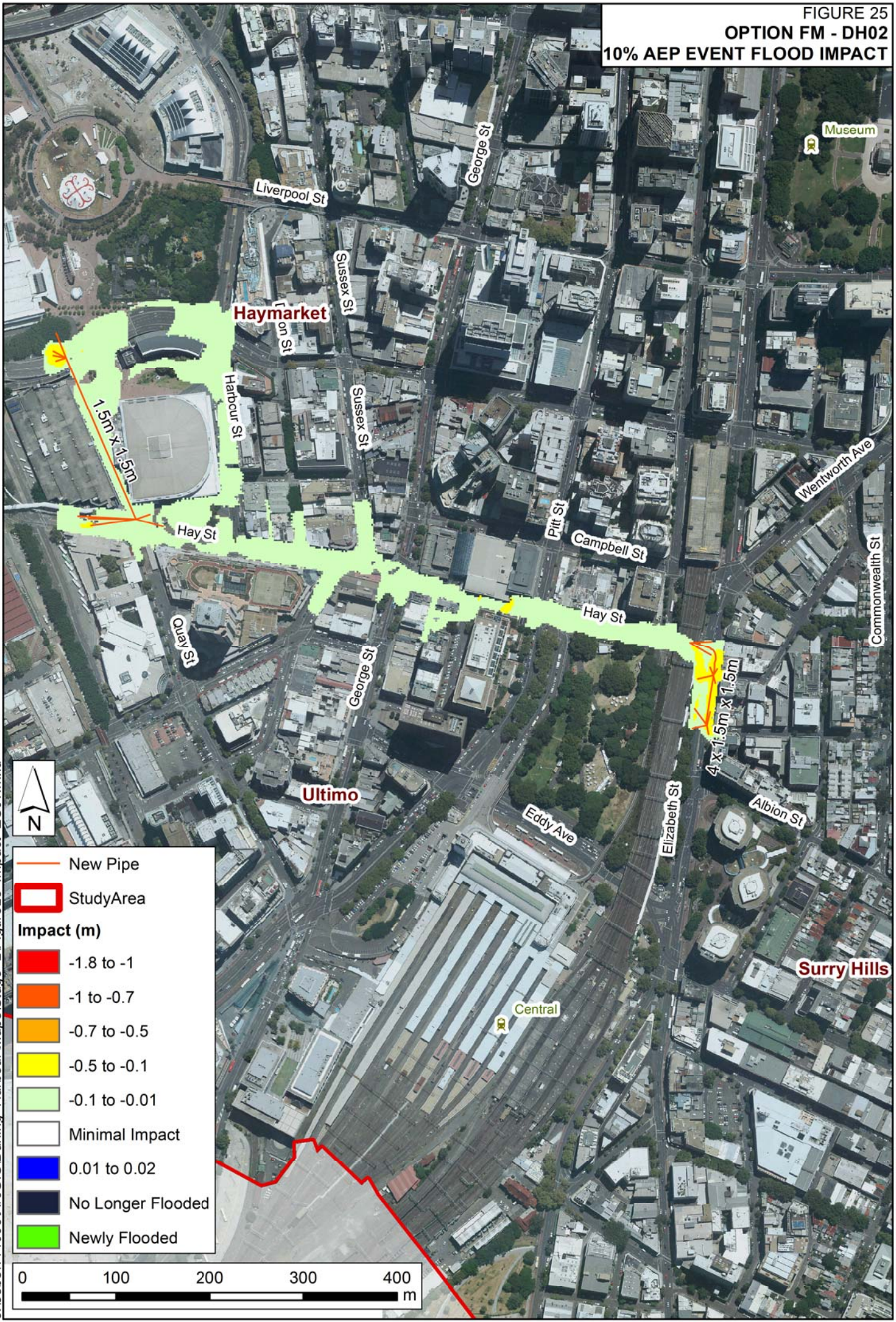
- New Pipe
- 84m<sup>3</sup>/s Peak Flow (Existing)
- 7.6m<sup>3</sup>/s Peak Flow (Upgrade)
- StudyArea
- Impact (m)**
- 1.8 to -1
- 1 to -0.7
- 0.7 to -0.5
- 0.5 to -0.1
- 0.1 to -0.01
- Minimal Impact
- 0.01 to 0.02
- No Longer Flooded
- Newly Flooded



J:\Jobs\114095\ArcGIS\Darling Harbour\Maps\Stage 2\Figure24\_Impact\_CS02.mxd







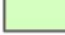






FIGURE 25  
 OPTION FM - DH02  
 10% AEP EVENT FLOOD IMPACT



J:\Jobs\114095\ArcGIS\Darling Harbour\Maps\Stage 2\Figure25\_Impact ES01.mxd



-  New Pipe
-  StudyArea
- Impact (m)**
-  -1.8 to -1
-  -1 to -0.7
-  -0.7 to -0.5
-  -0.5 to -0.1
-  -0.1 to -0.01
-  Minimal Impact
-  0.01 to 0.02
-  No Longer Flooded
-  Newly Flooded

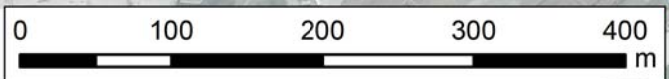
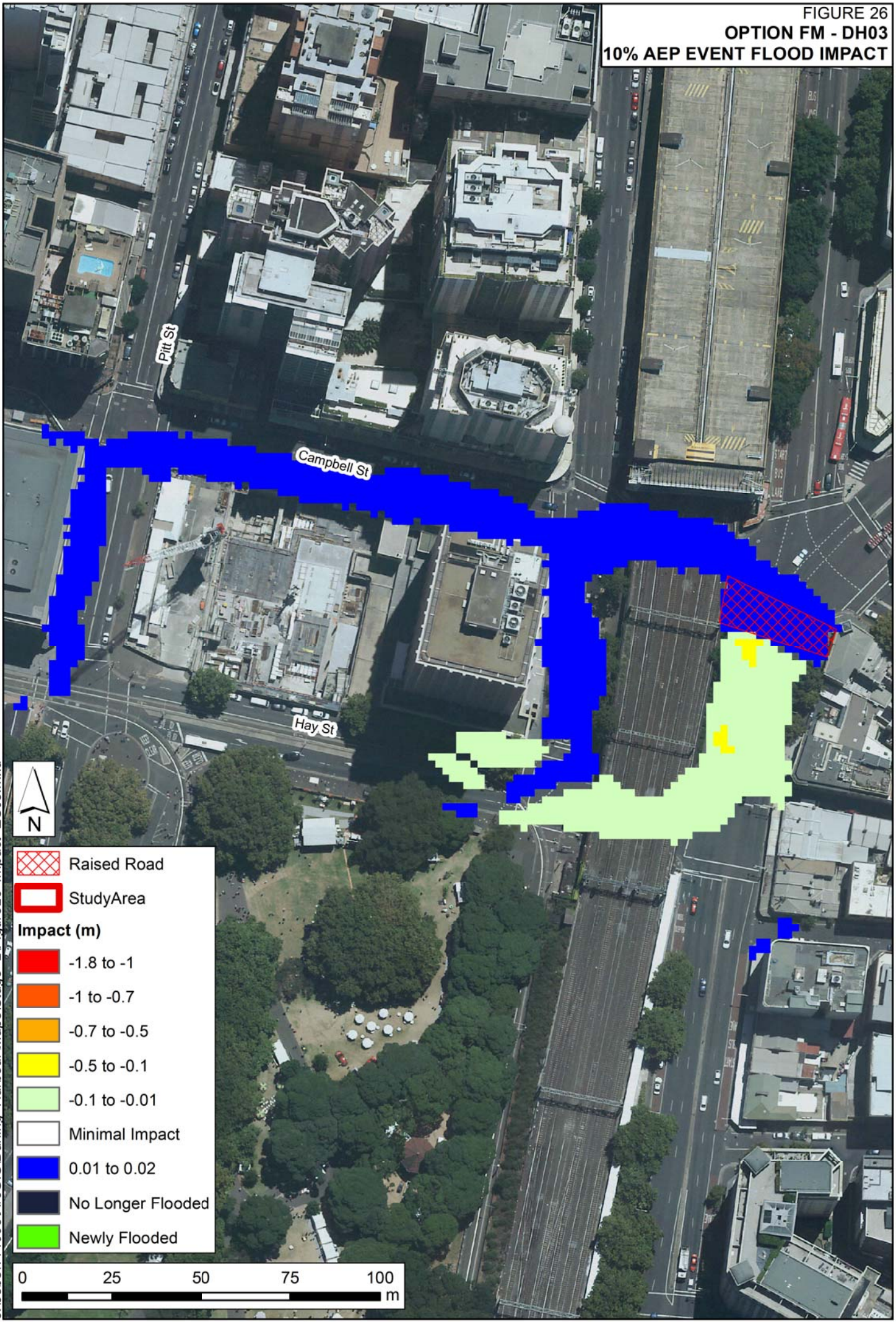








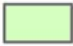






FIGURE 26  
 OPTION FM - DH03  
 10% AEP EVENT FLOOD IMPACT



J:\Jobs\114095\ArcGIS\Darling Harbour\Maps\Stage 2\Figure26\_Impact ES03.mxd



-  Raised Road
-  StudyArea
- Impact (m)**
-  -1.8 to -1
-  -1 to -0.7
-  -0.7 to -0.5
-  -0.5 to -0.1
-  -0.1 to -0.01
-  Minimal Impact
-  0.01 to 0.02
-  No Longer Flooded
-  Newly Flooded

